

# RUISSEAU



## BUILDING E

Elegant 3 Bedrooms | 2.5 Bath Townhomes | Loft | Screened Porch  
First Floor Owner's Suite with Luxurious Bath and Walk-in Shower with Bench Seat  
Gourmet Island Kitchen Opens to Dining and Great Room  
Second Floor Features Loft, Secondary Bedrooms and Storage

## THE WILMONT TOWNHOME 27

2,387 Square Feet  
685 Dobbs Road, Woodstock, GA 30188  
**COMING SOON**

**HOMES & TOWNHOMES FROM THE \$500s**  
**QUALITY OF LIFE | INSPIRED DESIGN | INTOWN LIVING**  
**LIVEATRUISSEAU.COM**

138 Kingwood Drive | Woodstock, GA 30188 | 770.516.3678

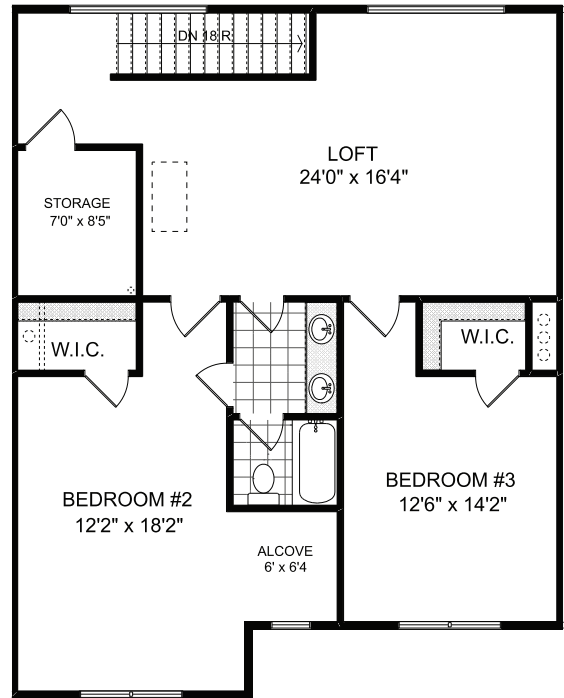
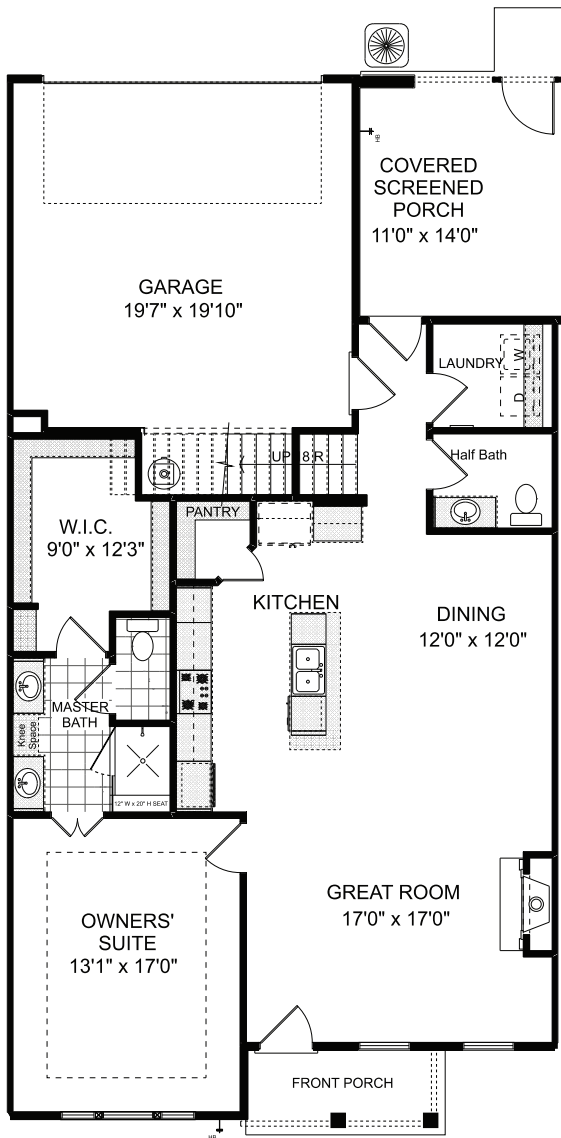
5.1.24



All illustrations, specifications, pricing and details are believed correct at the time of publication, Windsong Properties reserves the right to make changes, without notice or obligation. This brochure is for illustrative purposes only and not part of a legal contract. Information subject to changes, errors and omissions.  
© 2023 Windsong Properties



# RUISSSEAU



HOMES & TOWNHOMES FROM THE \$500s  
 QUALITY OF LIFE | INSPIRED DESIGN | INTOWN LIVING  
[LIVEATRUISSEAU.COM](http://LIVEATRUISSEAU.COM)

138 Kingwood Drive | Woodstock, GA 30188 | 770.516.3678

5.1.24



All illustrations, specifications, pricing and details are believed correct at the time of publication, Windsong Properties reserves the right to make changes, without notice or obligation. This brochure is for illustrative purposes only and not part of a legal contract. Information subject to changes, errors and omissions.  
 © 2023 Windsong Properties

